



The Research Council
of Norway

Subject-specific evaluations EVALBIOVIT EVALNAT



Self-assessment exercise
...and adaptation of Terms of Reference

Special adviser Jon Holm

EMPOWERING IDEAS FOR A BETTER WORLD

Who we are

Forskningsrådet

Jon Holm joh@forskningsradet.no

EVALBIOVIT

Hilde Dorthea Grindvik Nielsen hgn@forskningsradet.no

EVALNAT

Marianne Grønsleth magr@forskningsradet.no

Terje Strand ters@forskningsradet.no

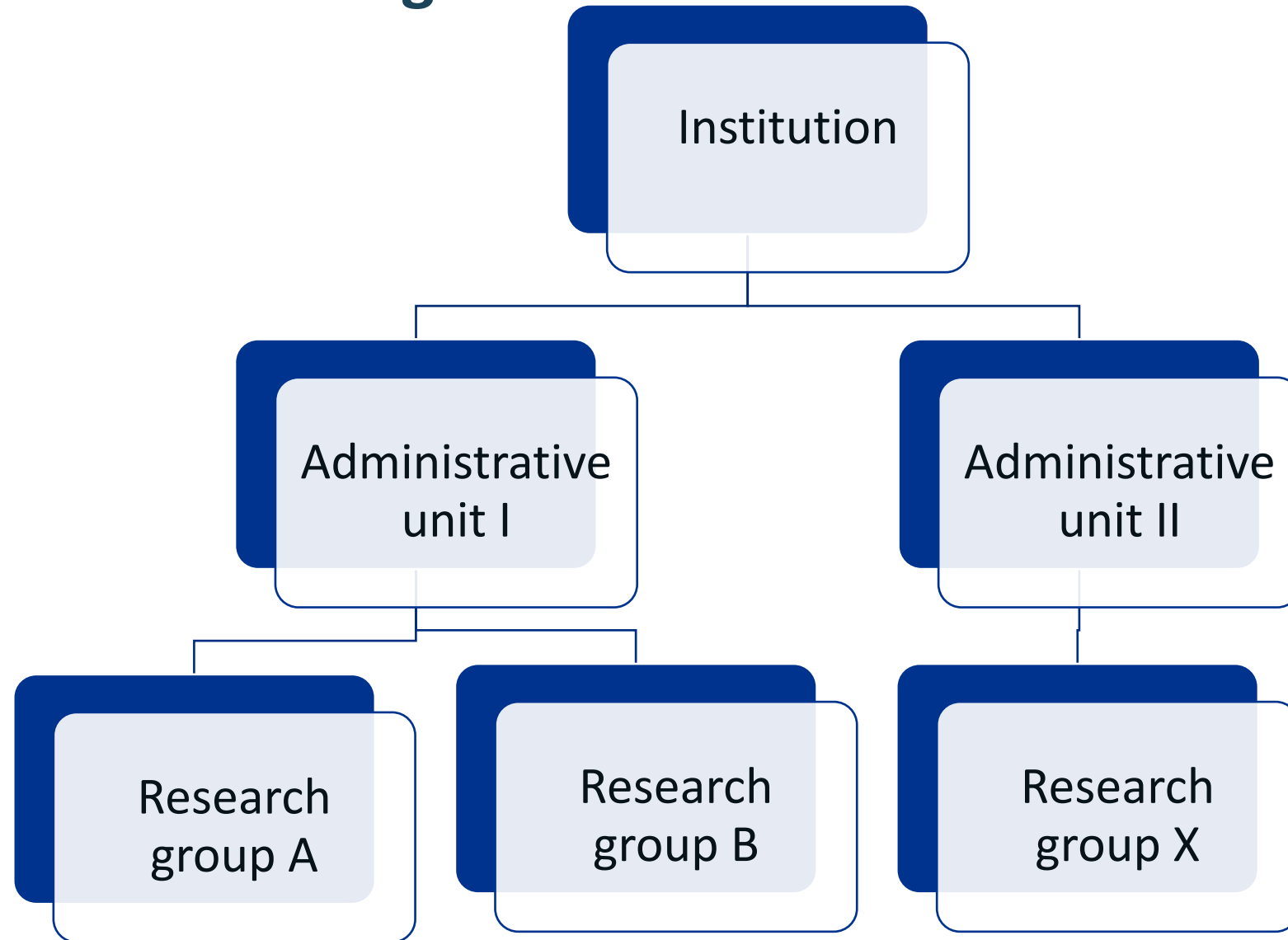
Technopolis

Göran Melin goran.melin@faugert.se

Love Edander Arvefjord love.edander-arvefjord@faugert.se



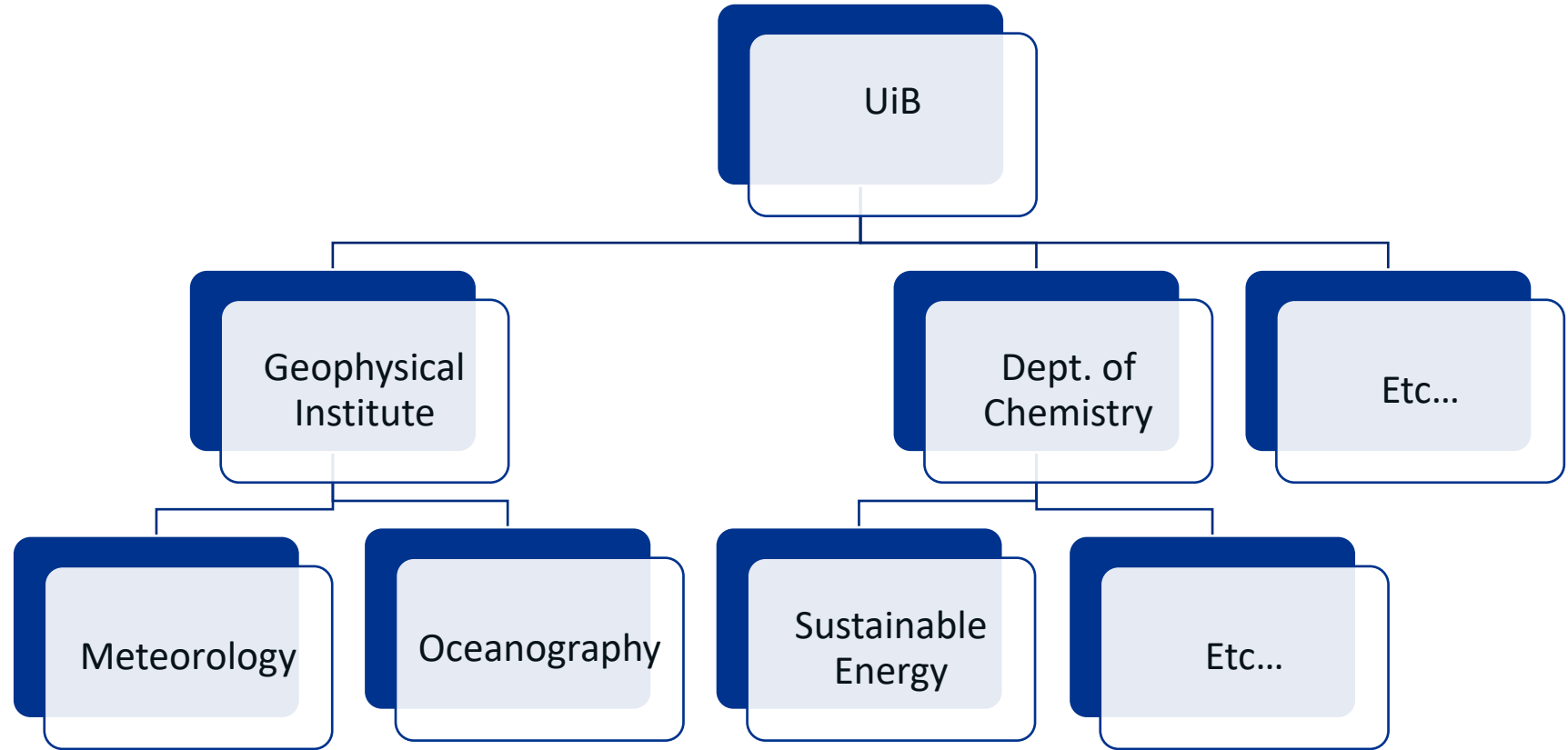
What are we evaluating?



An example

Administrative units

Research groups



Evaluation protocols are decided by RCN portfolio boards



Evaluation of life sciences in Norway 2022-2023

LIVSEVAL protocol version 1.0



Evaluation of natural sciences in Norway 2022-2023

Protocol version 1.0

By decision of the Portfolio board for Natural Sciences and Technology 5 April 2022



Terms of References (ToR)

The board of [RPO] mandates the evaluation committee appointed by the Research Council of Norway (RCN) to assess [administrative unit] based on the following Terms of Reference.

Assessment

You are asked to assess the organisation, quality and diversity of research conducted by [administrative unit] as well as its relevance to institutional and sectoral purposes, and to society at large. You should do so by judging the unit's performance based on the following five assessment criteria (a. to e.). Be sure to take current international trends and developments in science and society into account in your analysis.

- a) Strategy, resources and organisation
- b) Research production, quality and integrity
- c) Diversity and equality
- d) Relevance to institutional and sectoral purposes
- e) Relevance to society

For a description of these criteria, see Chapter 2 of the [research area] evaluation protocol. Please provide a written assessment for each of the five criteria. Please also provide recommendations for improvement. We ask you to pay special attention to the following [n] aspects in your assessment:

1. ...
2. ...
3. ...
- ...

[To be completed by the board: specific aspects that the evaluation committee should focus on – they may be related to a) strategic issues, or b) an administrative unit's specific tasks.]

In addition, we would like your report to provide a qualitative assessment of [administrative unit] as a whole in relation to its strategic targets. The committee assesses the strategy that the administrative unit intends to pursue in the years ahead and the extent to which it will be capable of meeting its targets for research and society during this period based on available resources and competence. The committee is also invited to make recommendations concerning these two subjects.

Documentation

The necessary documentation will be made available by the [research area] secretariat at Technopolis Group

The documents will include the following:

- a report on research personnel and publications within [research area] commissioned by RCN
- a self-assessment based on a template provided by the [research area] secretariat
- [to be completed by the board]

The board of [RPO] mandates the evaluation committee appointed by the Research Council of Norway (RCN) to assess [administrative unit] based on the following Terms of Reference.

We ask you to pay special attention to the following [n] aspects in your assessment:

1. ...
2. ...
3. ...
- ...

[To be completed by the board: specific aspects that the evaluation committee should focus on – they may be related to a) strategic issues, or b) an administrative unit's specific tasks.]

In addition, we would like your report to provide a qualitative assessment of [administrative unit] as a whole in relation to its strategic targets. The committee assesses the strategy that the administrative unit intends to pursue in the years ahead and the extent to which it will be capable of meeting its targets for research and society during this period based on available resources and competence. The committee is also invited to make recommendations concerning these two subjects.

Documentation

The necessary documentation will be made available by the [research area] secretariat at Technopolis Group

The documents will include the following:

- a report on research personnel and publications within [research area] commissioned by RCN
- a self-assessment based on a template provided by the [research area] secretariat
- [to be completed by the board]





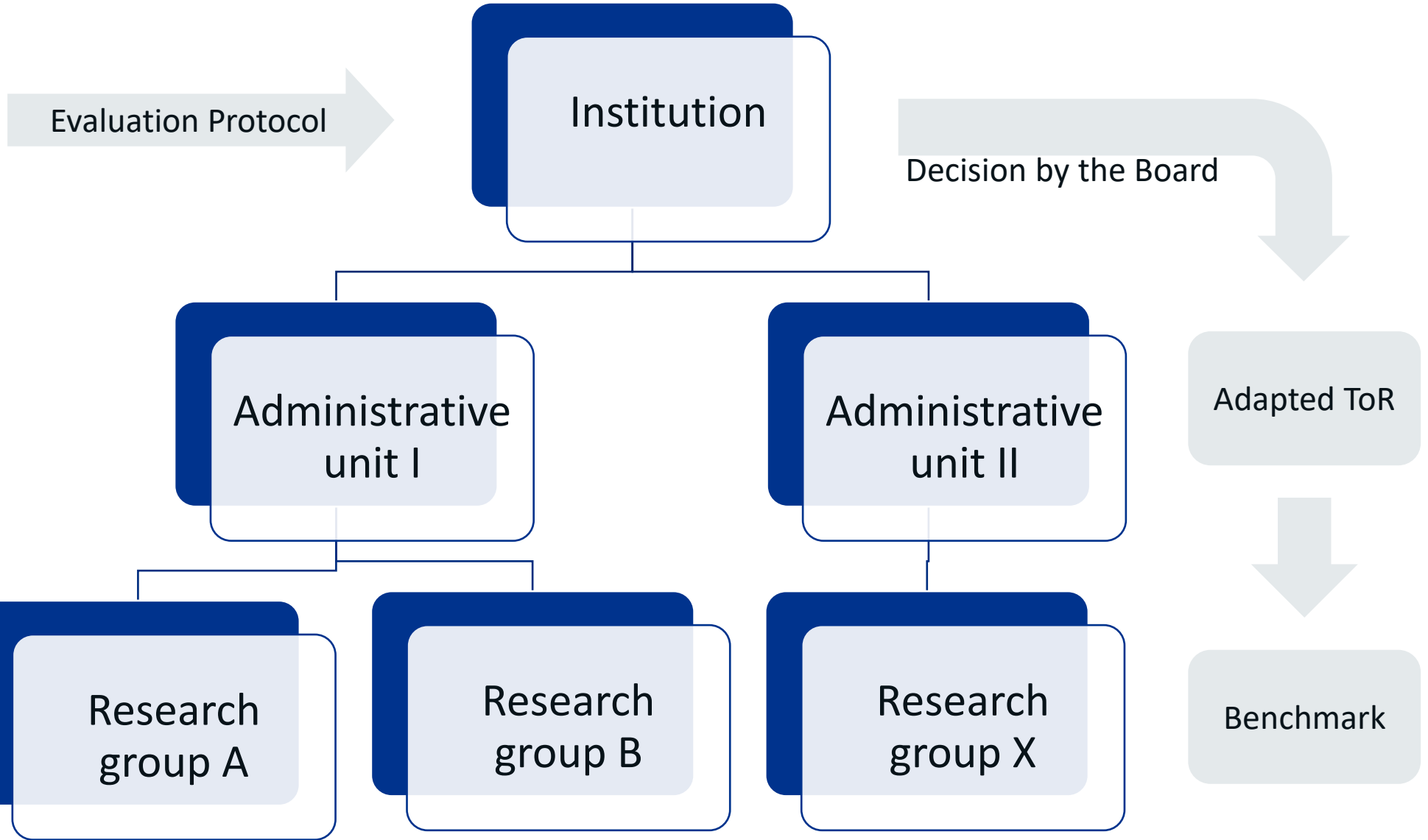
Examples of specific aspects that the assessment committee should focus on from the Evaluation of legal research in Norway (JUREVAL)

Norwegian business school (BI)

- BI's **specialism** in the field of business law
- The department's responsibility for **teaching of business law** in the various business administration programmes at BI

University of Bergen

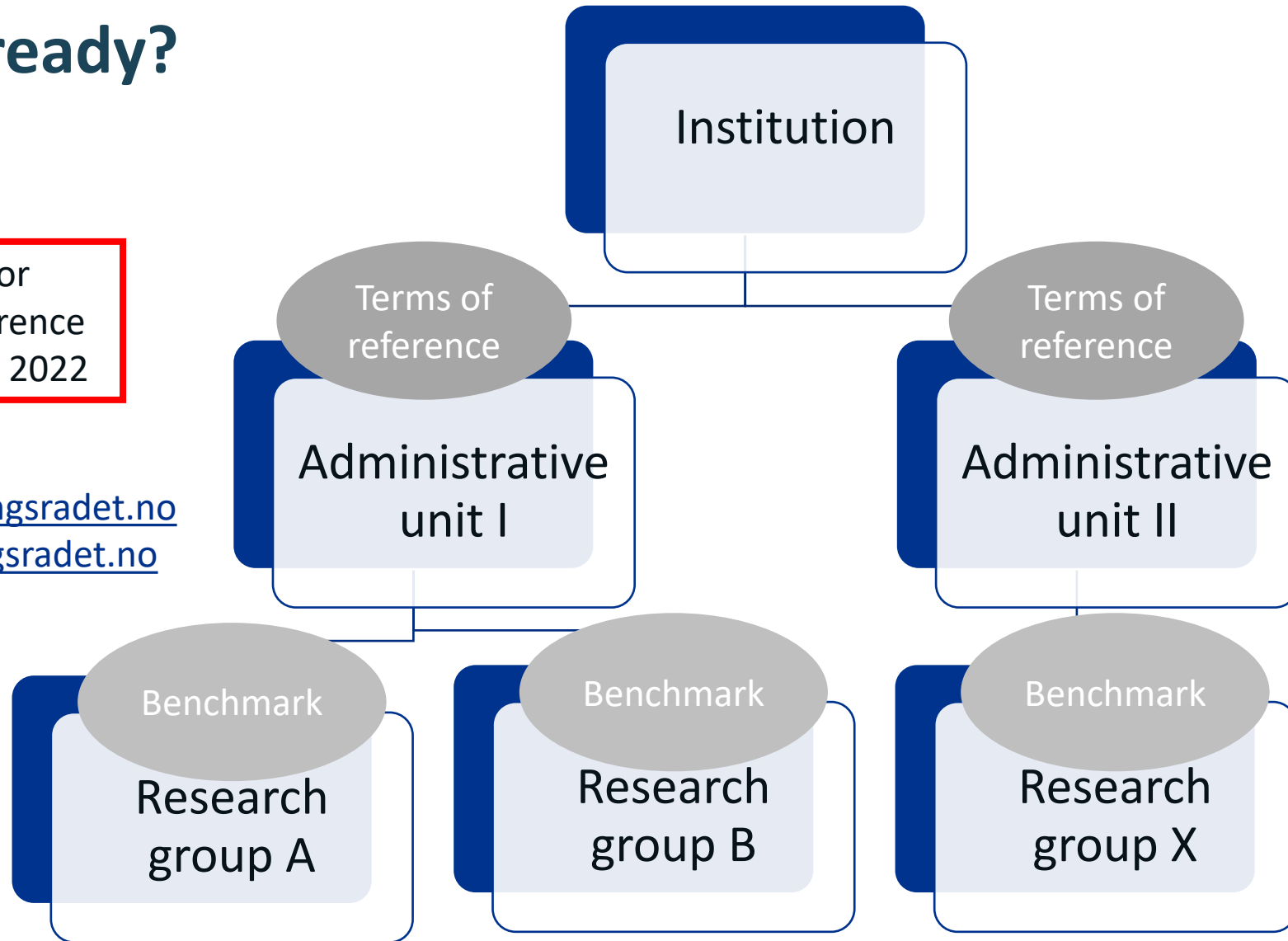
- strengthening **basic research** within traditional Law disciplines,
- developing **interdisciplinary research** collaborations on a regional, national, and international level
- Our efforts must be seen in relation to the specific geographical, economical, and institutional preconditions, including the **particular national/Nordic alignment** of the institution
- **encouraged young researchers** to engage in basic research and the Faculty has aimed to produce several high-quality PhD dissertations influencing basic research at the faculty and beyond



Are you ready?

Deadline for
Terms of Reference
30 September 2022

Send to
evalbiovit@forskningsradet.no
evalnat@forskningsradet.no



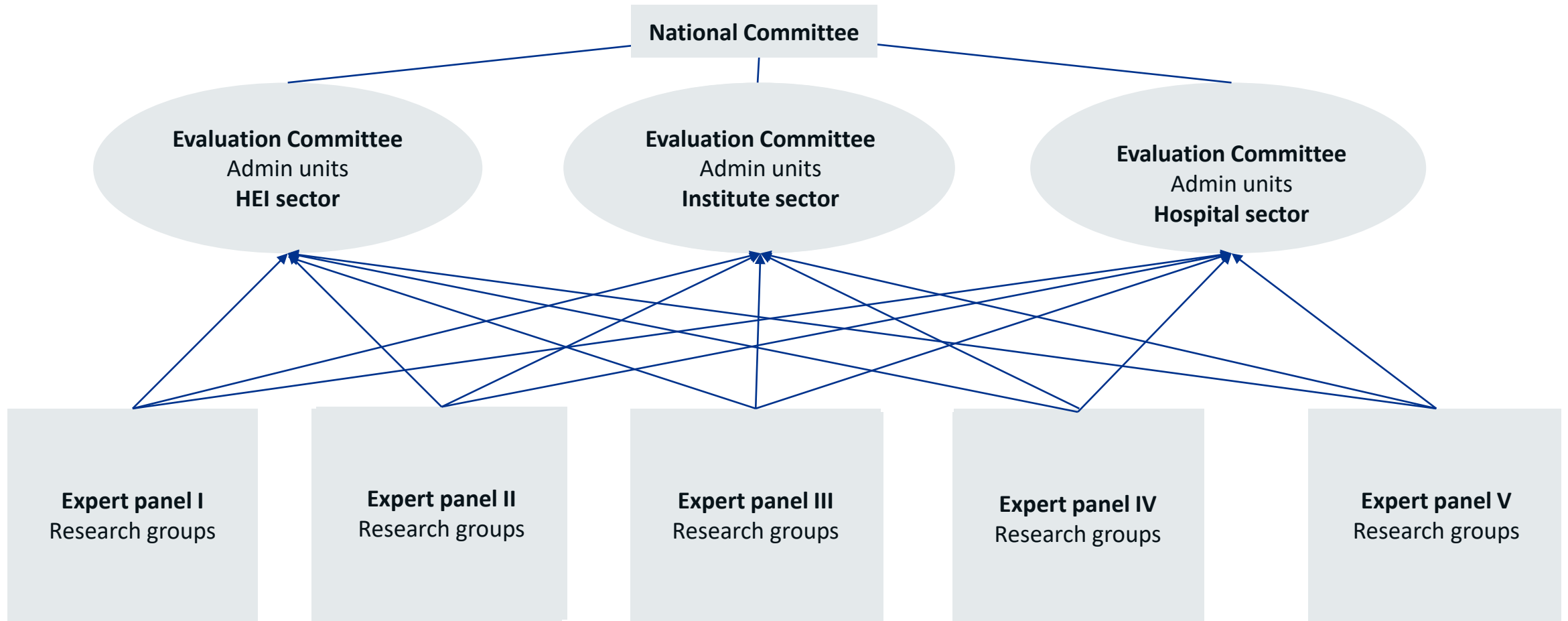
What could be a suitable benchmark?

From the Evaluation protocol

- The benchmark can be grounded in **both academic and extra-academic standards and targets**, depending on the purpose of the group and its host institution
- This benchmark can be
 - a reference to an academic level of performance or
 - to the group's contributions to other institutional or sectoral purposes
- The benchmark will be used as a **reference in the assessment of the unit-research group** by the expert panel



Evaluation structure





Assessment criteria and grading

Research groups

- Strategy, resources and organization
=> No grading
- Research quality and societal contribution
=> Two grading scales (1-5)
 - research quality
 - societal contribution

Administrative units

NO GRADING

- Strategy, resources and organisation of research
- Research production, quality and integrity
- Diversity and equality
- Relevance to institutional and sectorial purposes
- Relevance to society



EVALBIOVIT and EVALNAT

Self-assessment for research groups and administrative units, autumn 2022



Research groups and administrative units that participate in either EVALBIOVIT or EVALNAT have received self-assessment forms to fill in

- Key dates for **research groups**:
 - ↪ **9 Sep**: Send filled-in 'List of staff' to the group's administrative unit
 - ↪ **Ca.1 Dec**: Send completed self-assessment to administrative unit
- Key dates for **administrative units**:
 - ↪ **13 Sep**: Send collected 'Lists of staff' for the unit's research groups to the evaluation secretariat at Technopolis Group
 - ↪ **5 Dec**: Send collected self-assessments for the unit's research groups, plus the unit's own completed self-assessment, to the evaluation secretariat at Technopolis Group



Dimensions to be evaluated for research groups:

- Strategy, resources and organisation
- Research quality and societal contribution

Dimensions to be evaluated for administrative units:

- Strategy, resources and organisation of research
- Research production, quality and integrity
- Diversity and equality
- Relevance to institutional and sectorial purposes
- Relevance to society



The self-assessment contains questions with text boxes to fill in, for example:

- Describe the establishment and the development of the research group, including its leadership, researcher roles, the group's role in researcher training and mobility and how research is organised (1000–3000 characters).

Click on the text
box and insert your
information



The self-assessment also contains forms to fill in, for example:

- Instructions: Please complete the administrative data of staff resources.

Click on the cell and insert your information

	Position by category	No. of staff per category	Share of women per category	No. of FTE per category
Number of personnel by position	<Position A (Fill in)>	<No. of staff>	<% of staff>	<No. of FTE>
	<Position B (Fill in)>	<No. of staff>	<% of staff>	<No. of FTE>
	<Position C (Fill in)>	<No. of staff>	<% of staff>	<No. of FTE>
	<Position D (Fill in)>	<No. of staff>	<% of staff>	<No. of FTE>
	<Position E (Fill in)>	<No. of staff>	<% of staff>	<No. of FTE>
	<Position F (Fill in)>	<No. of staff>	<% of staff>	<No. of FTE>



Three key-words

- **Provide** information – provide documents and other relevant data or figures about the group/unit, for example strategy and other planning documents, as well as data on R&D expenditure, sources of income and results and outcomes of research
- **Describe** – explain and present using contextual information about the group/unit and inform the reader about the group/unit
- **Reflect** – comment in a reflective and evaluative manner how the group/unit operates



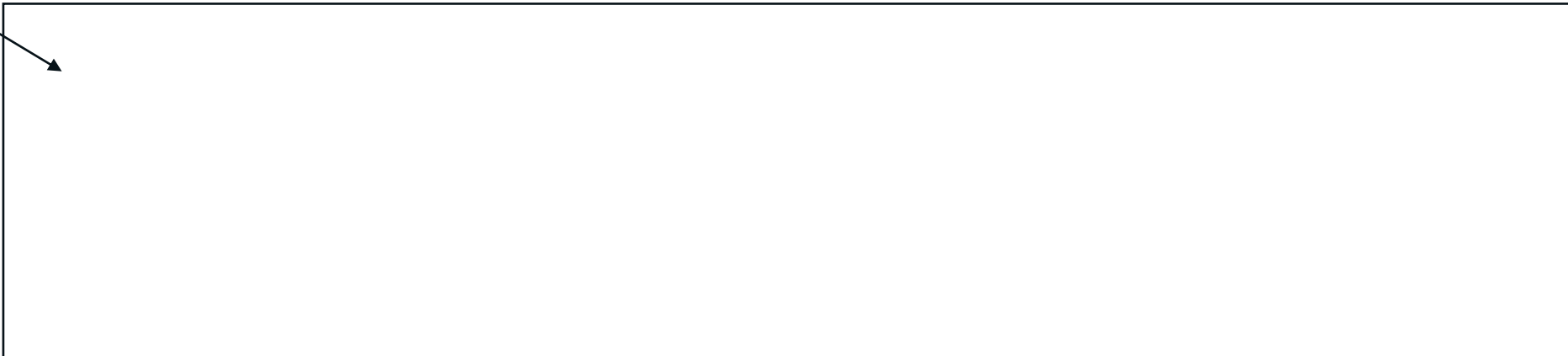
- It is not possible to write more text in the text boxes than the indicated maximum number of characters
- The indicated **maximum** number of characters **is not** to be seen as an expectation of how much to write! It is fine to write less
- If the text boxes and the forms are used to their maximum, the total length of the self-assessment will be very long – please **provide shorter answers when you can**
- Else, you may run the risk of annoying your evaluators!
- Again: Please use the min/max limits flexibly



The administrative unit needs to be involved in the self-assessment of its research groups to select an appropriate benchmark in consultation with the group in question (1000–2000 characters)

- For the administrative unit – present the benchmark for the research group. This benchmark can be a reference to an academic level of performance or to the group’s contributions to other institutional or sectoral purposes
- For the research group – describe how the group’s work contributes towards achieving the set benchmark

Click on the text box
and insert your
information



Errata – a few mistakes discovered so far

For research groups:

- Page 3, 4th bullet point: “...about the administrative unit...” – should be **research group**
- Page 5, footnote 2: “... list of group members by 1 October 2021” – should be **2022**. The footnote refers to the Excel list that was attached to the mail and where research groups should list staff members the past three years



We are here to support

- There may be questions and formulations that are difficult to understand
- There may be mistakes from our side in the self-assessments (hopefully minor and few)
- Please contact us at the evaluation secretariat at Technopolis Group with questions
- With time, we plan to create a list of frequently asked questions, FAQ, and answers



Mail us at

- evalbiovit.questions@technopolis-group.com
- evalnat.questions@technopolis-group.com



Thank you!

